

VERTICAL BIOETHANOL FIREPLACE

BIO-10-019

ScandiFlames tall wall-mounted bio fireplace in stainless steel, ideal for narrow walls with a width of only 48 cm. The fireplace measures H: 80 cm, W: 48 cm, D: 20 cm and has a front glass that protects the flames from wind. The included 1.0-liter bioethanol burner provides about 5 hours of burn time and a heat output of 1.3 kW. The burner features manual control and built-in ceramic wool for longer burn time and increased safety. Easy to install and maintain, as it produces no smoke, soot, or ash.

TECHNICAL SPECIFICATIONS

Key Specifications

Product type	Wall-mounted Bioethanol Fireplace
Brand	ScandiFlames
Included	Extinguishing Tool
Included	Bioethanol Burner
Included	User guide
Included	Bracket
Included	Screws
Included	Glass
Use	Indoor
Warranty	2 years

Dimensions & Weight

Length/Width	48 cm
Height	80 cm
Depth	20 cm
Weight	19 kg

Technical Specifications

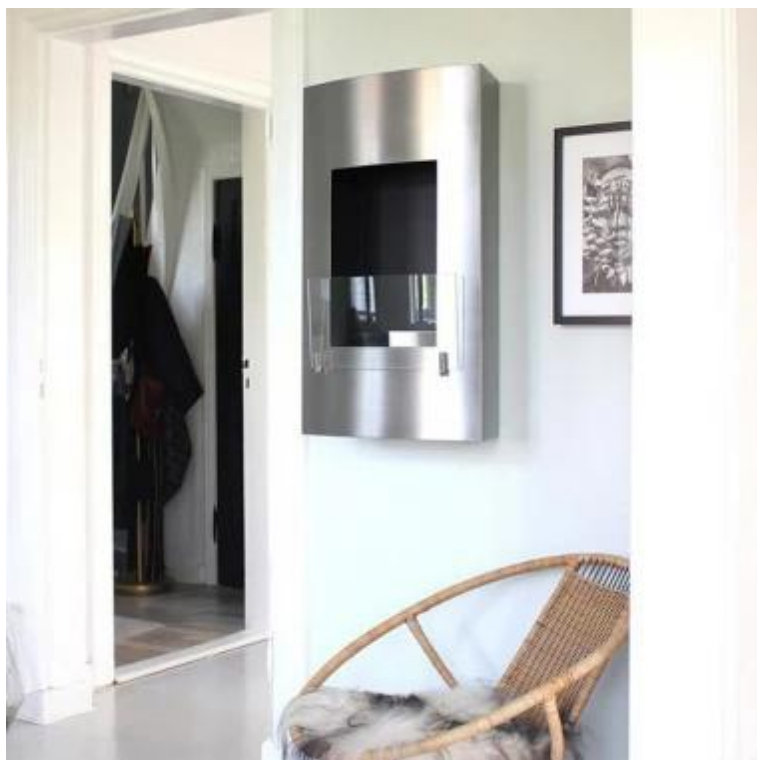
Minimum room size	40 m ³
Fuel	Bioethanol
Burning time up to	5 hours
Capacity	1 Litres
Heat output (max)	1,5 kW
Consumption	0.2 L/h
Recommended air change rate	1

Burner Specifications

Adjustable flame	Yes
Control	Manual
Burner Model	1.0 Litre Deluxe
Flame length	18 cm
Remote control	No

Material and Appearance

Material	Steel
Colour	Stainless Steel



Interior (colour/material)	Black
Flame view	Front
Shape	Oblong
Glas included	Yes

Installation Details

Flue/Chimney	Not Required
Power Requirements	No

